

## SL 800: How to fasten/loosen slight height mechanism ?

All directions are described from doctor/operators point of view.

### Parts/Tools needed

- SL 800 that needs to be adjusted
- Allan / hex / Inbus key: 1.3 mm

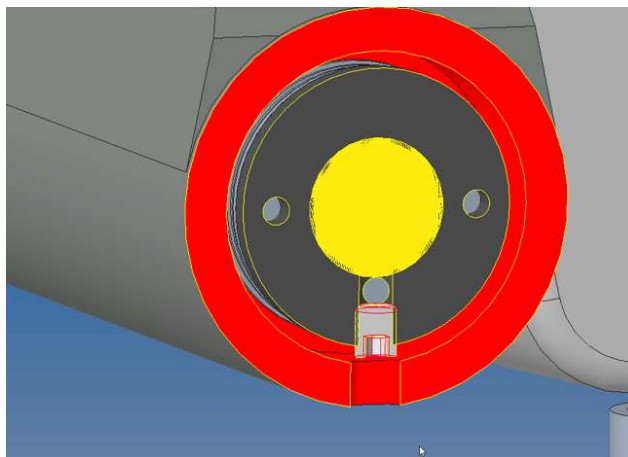
### Process

1. Locate hole in the bottom of the grey SL 800 projector part next to the right hand (doctors view) slit width control knob (cmp. Figure 1)



*Figure 1: Close-up view from bottom on to right (doctors view) SL 800 slit width control. Of interest is the hole in the main grey part next to the black knob*

2. To find the set screw (cmp. Figure 2), stick 1.3 mm Allan / hex / Inbus key into hole, while slowly turning the left slit width adjustment knob. At some point you will feel an indent and the tool will engage in set screw.



*Figure 2: Cross sectional view from right side on to right SL 800 slit width control mechanism. A set-screw (grey) locking a nut (dark grey) in place on an axle (yellow) inside the housing (red) can be seen.*

3. Loosen set screw by turning it not more than 1 revolution; please take care not to fully remove the set screw and the ball inside.

4. While keeping the tool in set screw in place, blocking the nut inside from moving with the axle, turn the left side slit height adjustment knob by roughly
  - 90° clockwise (CW) to increase the friction of the mechanism, or
  - 90° counter clockwise (CCW) to decrease / loosen the friction of the mechanism.
5. Lock the set screw in place.
6. Remove the tool and check if the friction is at the liking of the customer. If so, you are done.
  
7. If not repeat steps 2 through 6, ideally with smaller increments for the angle until the slit lamp width adjustment is to your customers liking.