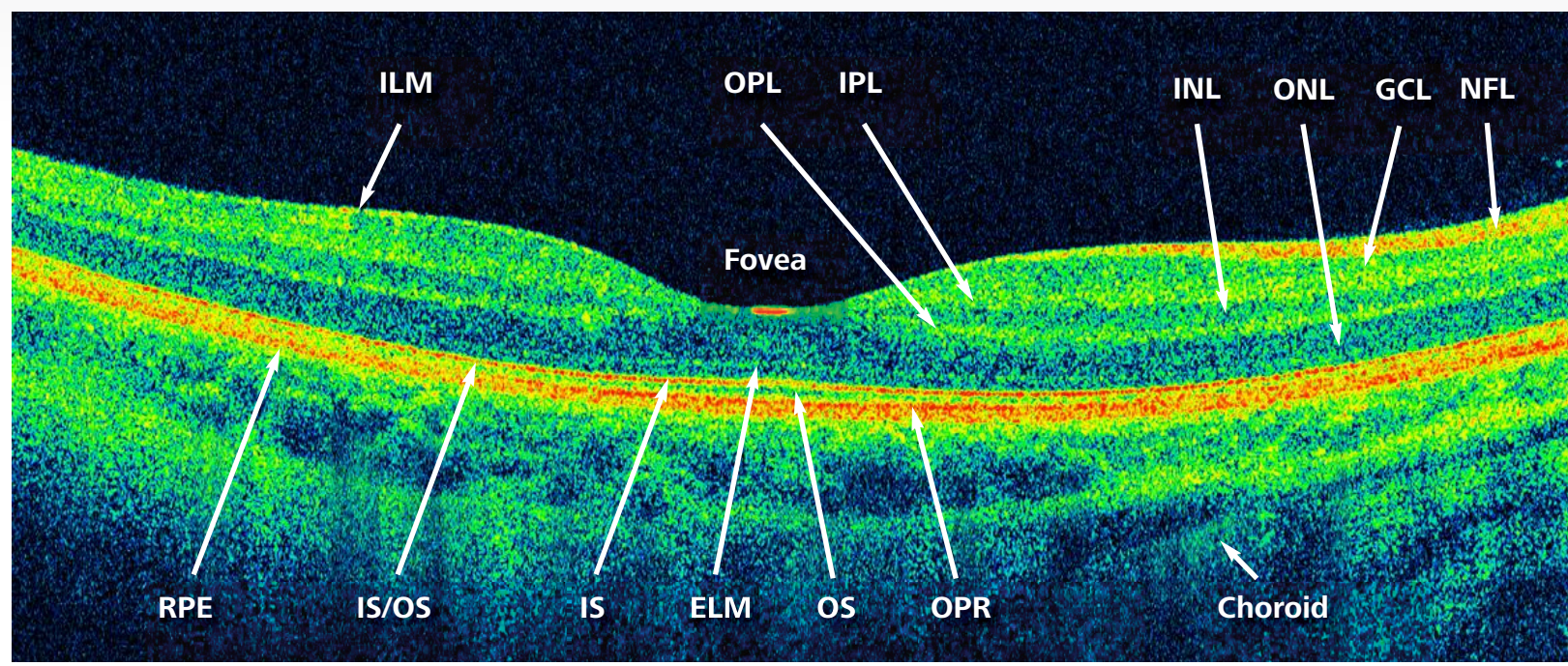


Exploring the Eye With Cirrus HD-OCT

An HD-OCT scan of a healthy eye



NFL: Nerve fiber layer	OPL: Outer plexiform layer	IS/OS: Interface between IS and OS
ILM: Inner limiting membrane	ONL: Outer nuclear layer	RPE: Retinal pigment epithelium
GCL: Ganglion cell layer	ELM: External limiting membrane	OPR: Outer photoreceptor/RPE complex
IPL: Inner plexiform layer	IS: Photoreceptor inner segment	
INL: Inner nuclear layer	OS: Photoreceptor outer segment	

HD maps of a healthy eye



ILM layer map

RPE layer map

Retinal thickness map

The eye and the inner layers of the retina

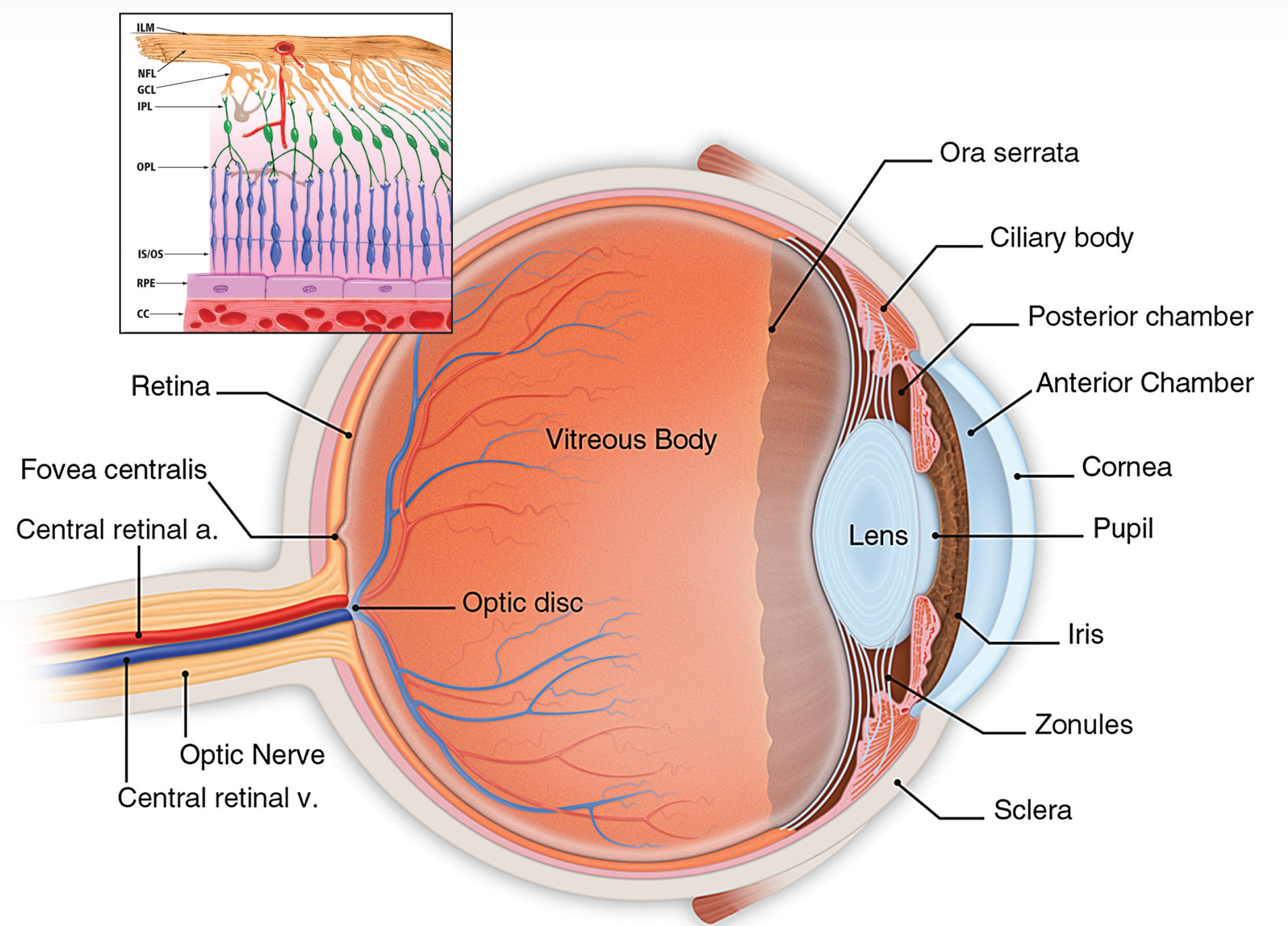
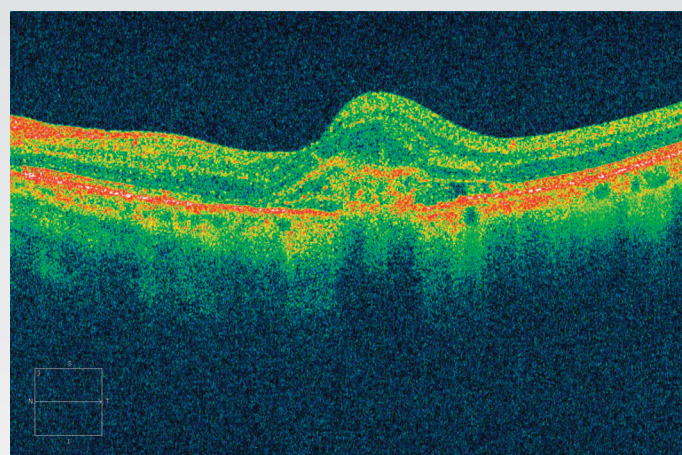
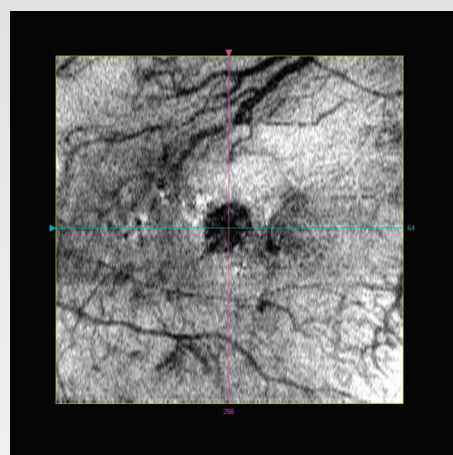


Image courtesy of the American Academy of Ophthalmology

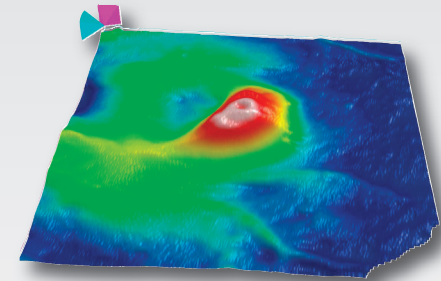
High Definition OCT imaging reveals eye diseases



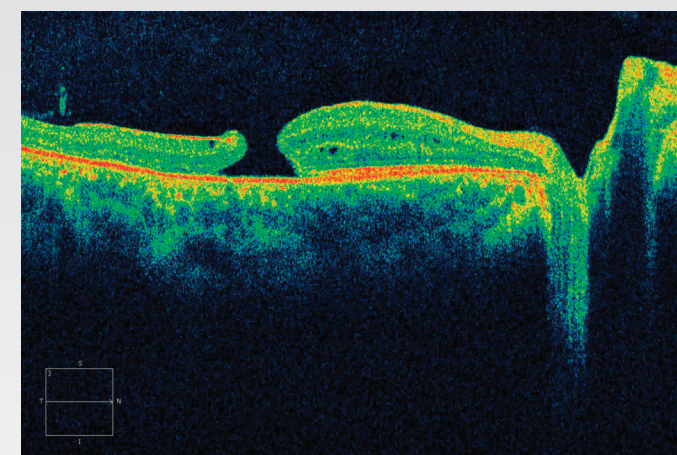
Age-related macular degeneration, wet form



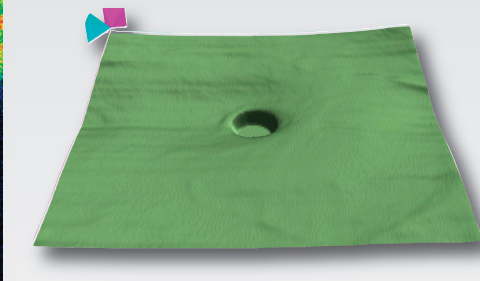
Advanced Visualization – RPE layer



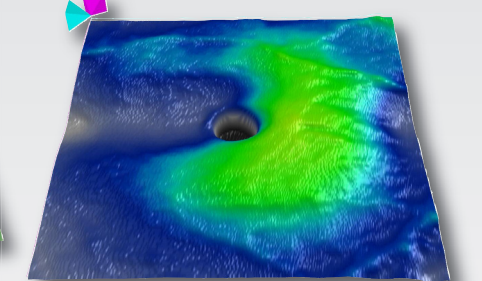
Retinal thickness map



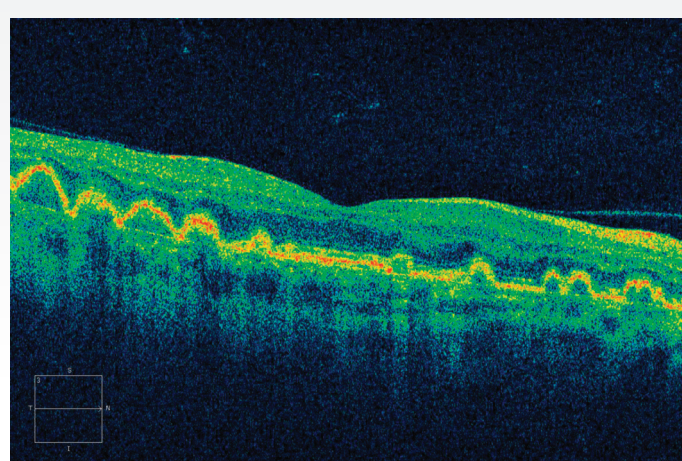
Macular hole



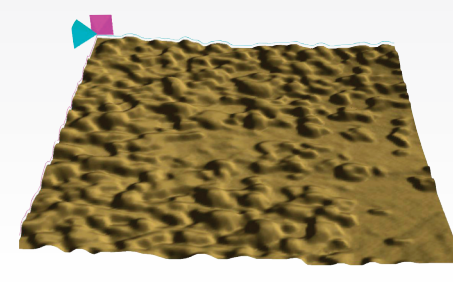
ILM layer map



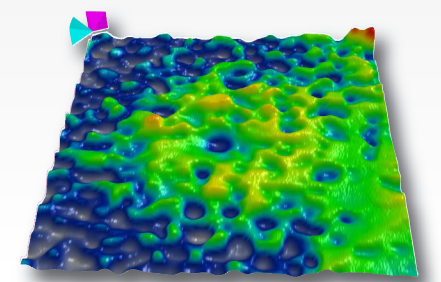
Retinal thickness map



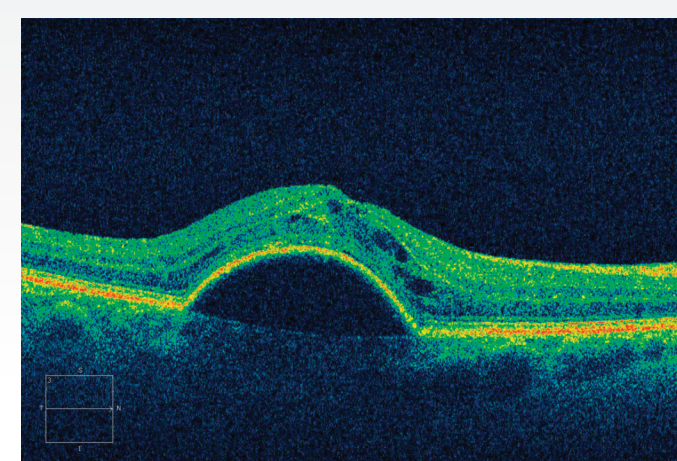
Age-related macular degeneration, dry form with drusen



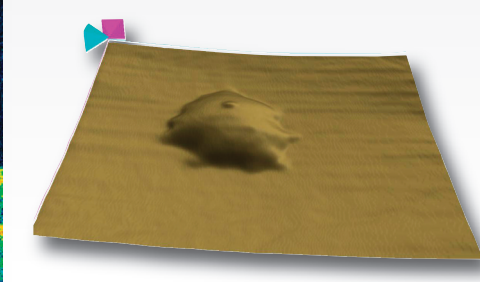
RPE map



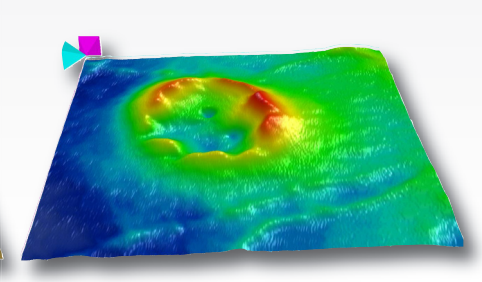
Retinal thickness map



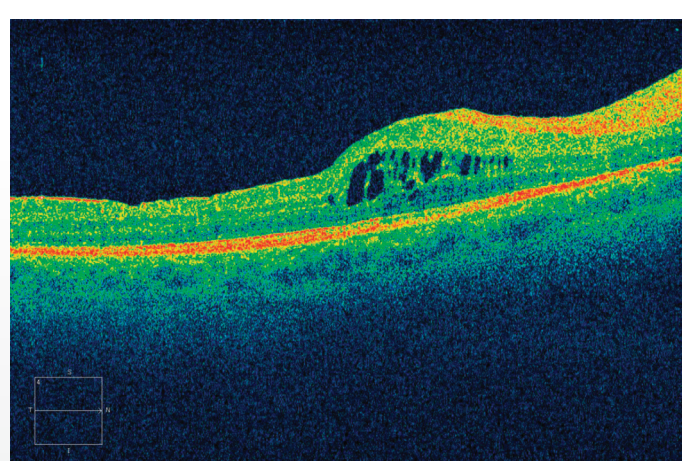
Pigment epithelial detachment



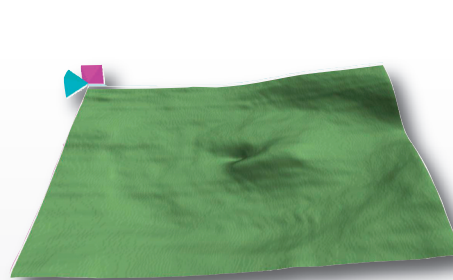
RPE layer map



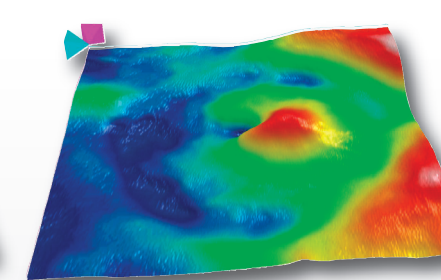
Retinal thickness map



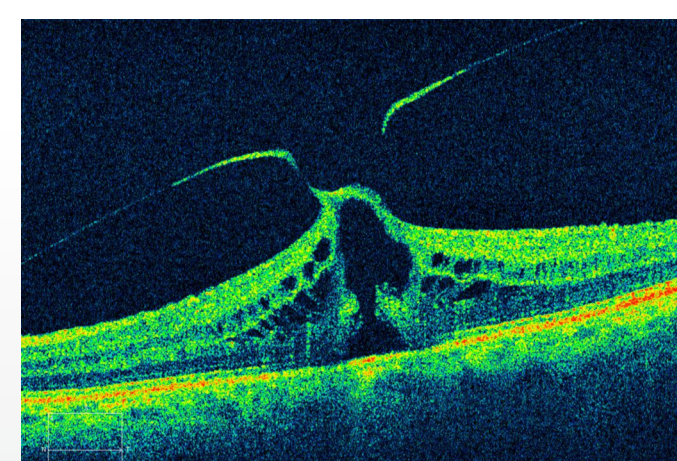
Diabetic macular edema



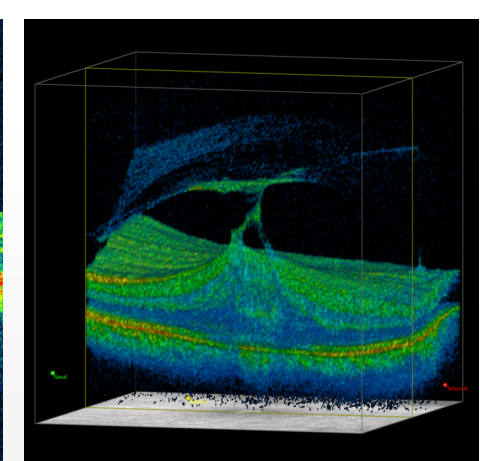
ILM layer map



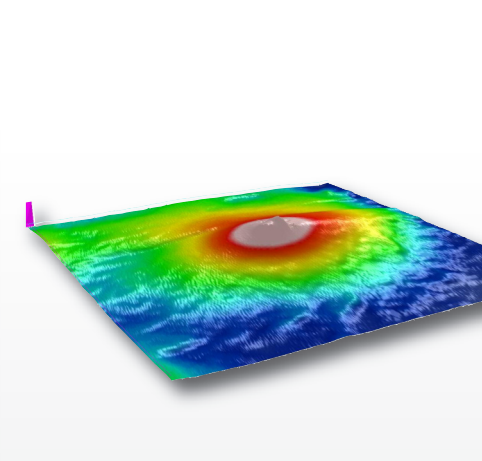
Retinal thickness map



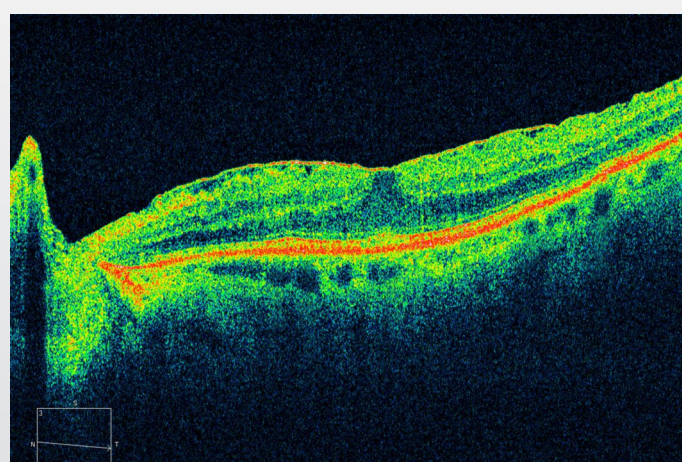
Vitreomacular traction



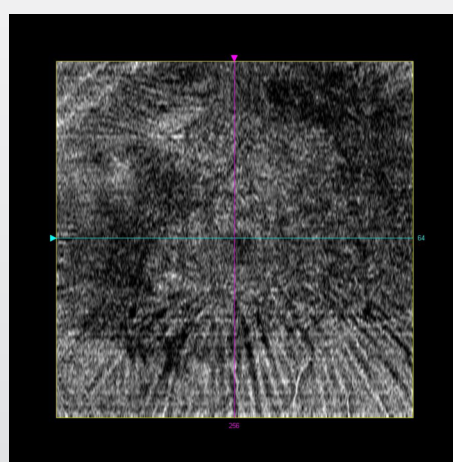
3D cube



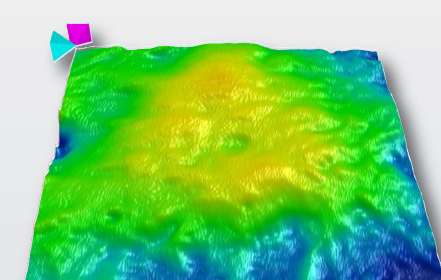
Retinal thickness map



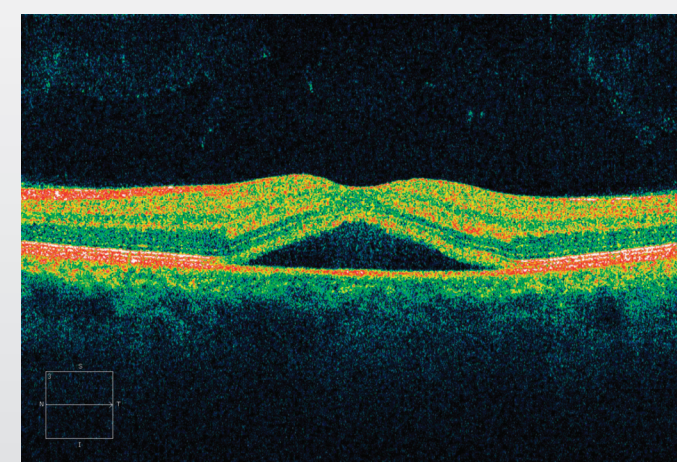
Epiretinal membrane



Advanced Visualization – ILM layer



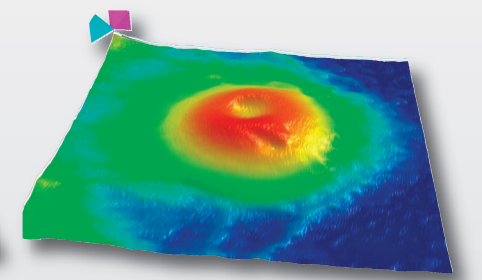
Retinal thickness map



Central serous chorioretinopathy



ILM layer map



Retinal thickness map

OCT images courtesy of Jim Crowell, OCT-C, Bascom Palmer Eye Institute, University of Miami

Carl Zeiss Meditec Inc.
5160 Hacienda Drive
Dublin, CA 94568
USA

Phone: 1-800-342-9821
Fax: 925-557-4217
info@meditec.zeiss.com
www.meditec.zeiss.com

